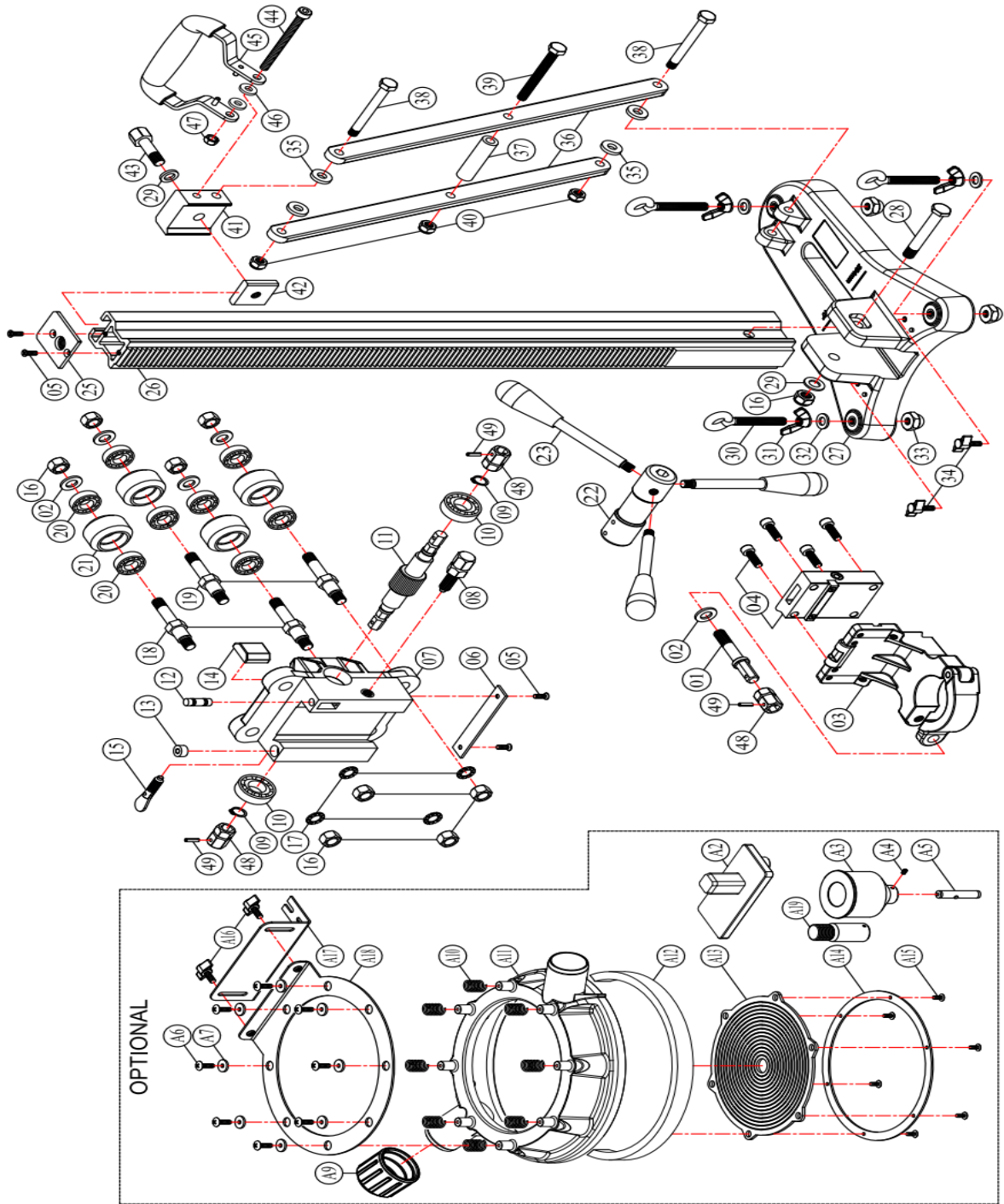


MODEL : AS200 Stand (AGP Europe) DATE : 2017.08.09 Version 1.6

	NO.	Parts Name	Q'TY
302-04331-907-001	1.)	CLAMP SCREW (M12)	1
424-132320-00	2.)	FLAT WASHER (1/2"xØ23x2)	5
201-0100-0164-001	3.)	CLAMP BRACKET (Ø60)(RED-187C)	1
0299-0036-00000-005	4.)	MOUNTING SPACER	1
415-M05012080-080	5.)	FLAT HEAD MACHINE SCREW (M5x12xP0.8)	4
302-03135-901-001	6.)	CRADLE PLATE	1
0201-0073-00003-002	7.)	CARRIAGE (GRAY-RAL7016)	1
302-04233-914-001	8.)	LOCK SCREW	1
422-S15-0	9.)	EXTERNAL CIRCLIP (S-15)	2
302-05508-000-006	10.)	BALL BEARING (6002)	2
302-04012-903-005	11.)	CRANK SPINDLE	1
305-00095-000-001	12.)	BUBBLE LEVEL	1
305-00093-000-001	13.)	BULLS-EYE LEVEL	1
303-01176-004-001	14.)	PLASTIC PAD	1
302-04475-901-001	15.)	SWIVEL LOCK TAB (M10xP1.5)	1
418-M12000175-080	16.)	NYLOCK NUT (M12xP1.75)	9
426-120000-00	17.)	EXTERNAL STAR WASHER (M12)	4
302-04230-903-001	18.)	ECCENTRIC SHAFT	2
302-04145-907-002	19.)	ROLLER AXLE	2
302-05515-000-003	20.)	BALL BEARING (6201)	8
302-04229-004-001	21.)	GUIDE ROLLER	4
0299-0035-00000-003	22.)	CRANK BOSS	1
299-0068-00004-001	23.)	CRANK HANDLE (BLACK)	3
302-03218-901-001	25.)	COLUMN CAP PLATE	1
201-0070-00913-009	26.)	COLUMN	1
0299-0011-00026-001	27.)	BASE (GRAY-RAL7016)	1
302-04177-903-003	28.)	PIVOT BOLT	1
424-122320-20	29.)	FLAT WASHER (Ø12xØ23x2.0)	2
302-04267-903-003	30.)	EYE BOLT	3
305-00376-005-001	31.)	WING NUT (M10xP1.5)	3
424-102320-20	32.)	FLAT WASHER (Ø10xØ23x2)	3
4105-M10000150-080	33.)	ACORN NUT (M10xP1.5)	3
203-0064-00903-002	34.)	THUMB SCREW (M6x16xP1.0)	2
303-01322-000-003	35.)	FLAT WASHER	4
201-0042-00906-005	36.)	BUTTRESS BAR	2
302-04295-914-003	37.)	SPACER	1
302-04177-903-002	38.)	PIVOT BOLT	2
401-M10095150-080	39.)	HEX BOLT (M10x95LxP1.5)	1
418-M10000150-080	40.)	NYLOCK NUT (M10xP1.5)	3
201-0071-00906-003	41.)	BUTTRESS LOCK	1
302-03133-912-001	42.)	LOCK PLATE	1
302-04153-914-001	43.)	ANGLE LOCK CLAMP	1
406-M08085125-080	44.)	SOCKET CAP SCREW (M8x85xP1.25)	1
202-0036-00902-002	45.)	FRONT HANDLE	1
424-082030-20	46.)	FLAT WASHER (Ø8xØ20x3)	2
418-M08000125-080	47.)	NYLOCK NUT (M8xP1.25)	1
302-04160-914-001	48.)	HEX ADAPTOR	3
462-27	49.)	ROLL PIN (Ø4x18)	3
0299-0253-0000-001	A2.)	EXTENSION MAST BRACKET	1
301-03038-906-001	A3.)	LASER CONNECTOR	1
404-M04006070-050	A4.)	SOCKET SET SCREW (M4x6xP0.7)	1
305-00378-000-001	A5.)	LASER POINTER UNIT	1
496-M05012001-080	A6.)	SOCKET CAP SCREW (M5x12xP0.8)	8
424-051912-20	A7.)	FLAT WASHER (Ø5xØ19x1.2)	8
303-02013-004-004	A9.)	END CAP	1
302-04026-000-013	A10.)	SPRING (Ø0.7xØ12xØ15x5Tx21L)	8
303-01366-004-001	A11.)	WATER COLLECTOR BODY	1
0203-0131-00000-006	A12.)	SEAL(760MM)	1
303-02073-000-001	A13.)	MEMBRANE	3
302-03244-914-001	A14.)	MOUNTING RING	1
496-M04008001-080	A15.)	TRUSS HEAD TAPPING SCREW-A (M4x8)	6
203-0064-00903-002	A16.)	THUMB SCREW (M6x16xP1.0)	2
302-03243-914-002	A17.)	ANGLE BRACKET	1
302-03243-914-003	A18.)	RING BRACKET	1
301-03038-906-002	A19.)	LASER CONNECTOR	1

MODEL : AS200 Stand (AGP Europe)



2017.08.09 NO.01-49 A1-A19 Version 1.6