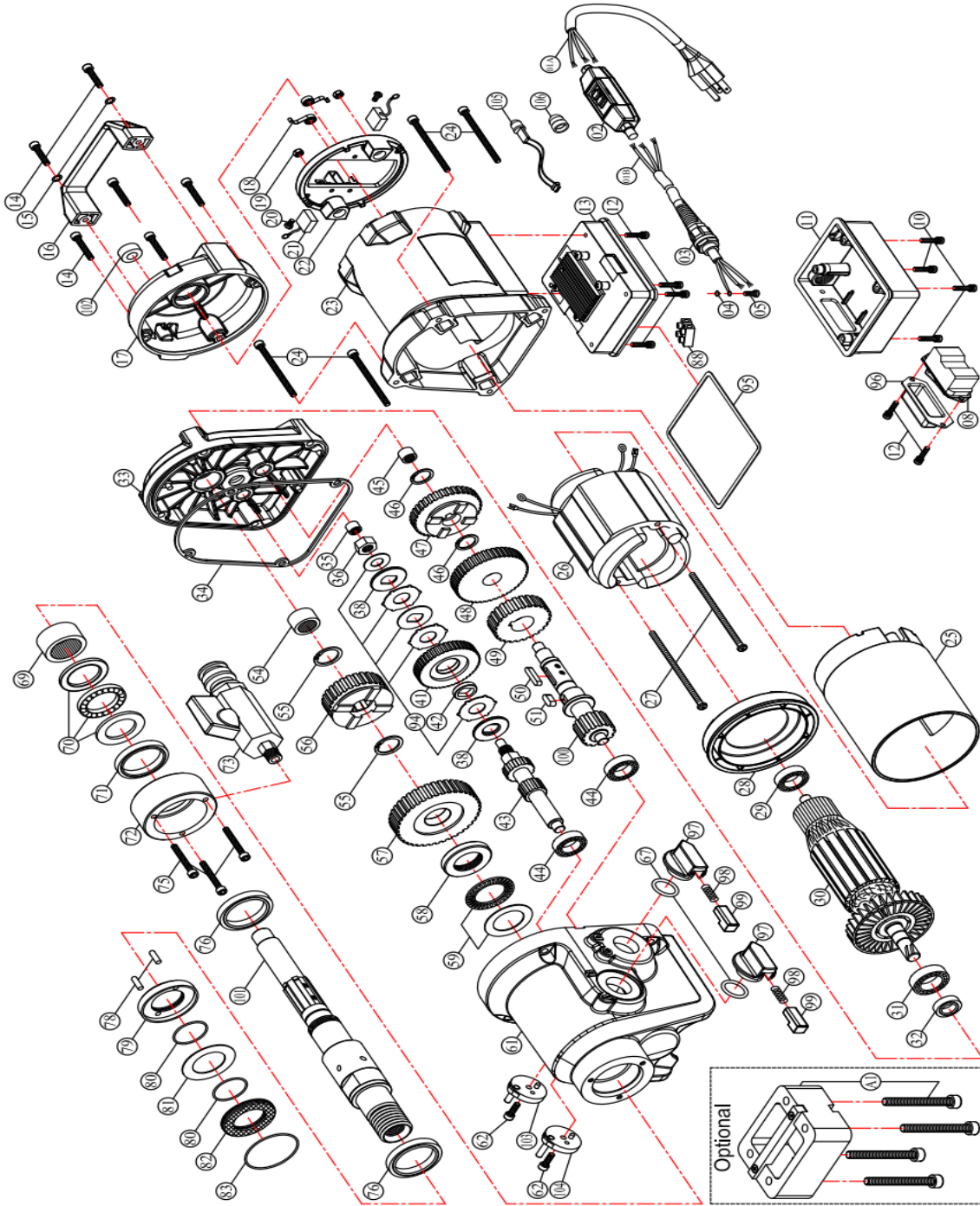


MODEL : DM14 / 4 Speed diamond core drill (AGP Europe) DATE : 2017.04.12 Version 1.3

	NO.	Parts Name	Q'TY
206-031503014-01	1A.)	POWER SUPPLY CABLE (VDE-1.5x3Cx1.4M-H07RNF)	1
206-201503210-01	1B.)	POWER SUPPLY CABLE (NO PLUG-1.5x3Cx2.1M-H07RNF)	1
304-03013-004-008	2.)	PRCD INTERRUPTER PROTECTION (220V)	1
303-02001-004-006	3.)	CORD ARMOR	1
426-040000-00	4.)	EXTERNAL STAR WASHER (M4)	1
407-M04010070-050	5.)	PANHEAD MACHINE SCREW (M4x10xP0.7)	1
304-03017-000-005	8.)	SWITCH (220V)	1
403-M04025003-020	10.)	PANHEAD TAPPING SCREW-B (M4x25)	4
203-0108-00004-002	11.)	COVER (220V)	1
412-M04012070-050	12.)	PANHEAD MACHINE SCREW-W/WASHER (M4x12xP0.7)	6
0299-0040-20000-008	13.)	ELECTRONICS UNIT (220V)	1
406-M05025080-080	14.)	SOCKET CAP SCREW (M5x25xP0.8)	6
424-051210-10	15.)	FLAT WASHER (Ø5xØ12x1)	2
303-01129-164-001	16.)	TOP HANDLE (RED-185C)	1
201-0015-00026-002	17.)	MOTOR END CASTING (GRAY-RAL7014)	1
302-04009-000-004	18.)	BRUSH SPRING (0.4x4x3T)	2
418-M05000080-050	19.)	NYLOCK NUT (M5xP0.8)	2
407-M04006070-120	20.)	PANHEAD MACHINE SCREW (M4x6xP0.7)	2
299-0027-00000-007	21.)	CARBON BRUSH (7x17x19)	2
0299-0141-00000-002	22.)	BRUSH HOLDER PLATE ASSY.	1
201-0020-00026-002	23.)	MOTOR HOUSING (GRAY-RAL7014)	1
406-M06075100-080	24.)	SOCKET CAP SCREW (M6x75xP1.0)	4
303-01297-000-002	25.)	MOTOR INSULATION SLEEVE	1
299-0002-20000-080	26.)	STATOR (220V-100x54.1x75)	1
407-M05110080-050	27.)	PANHEAD MACHINE SCREW (M5x110xP0.8)	2
303-01057-004-019	28.)	FAN SHROUD (BLACK)	1
302-05514-000-008	29.)	BALL BEARING (6200)	1
299-0001-20000-125	30.)	ARMATURE (220V-100x54.1x75)	1
302-05516-000-002	31.)	BALL BEARING (6202)	1
303-02002-004-036	32.)	OIL SEAL (Ø14xØ25x7)	1
0299-0125-00164-001	33.)	GEAR PLATE (RED-185C)	1
303-02054-000-001	34.)	GASKET	1
302-05105-000-005	35.)	NEEDLE BEARING (HK 0810)	1
302-04162-901-011	36.)	CLUTCH NUT (M12xP1.75x9T)	1
302-03220-000-001	38.)	PRESSURE DISC (Ø34.8xØ16x2.5)	2
302-06005-000-027	41.)	INPUT GEAR (M1.25x44T)	1
307-03006-000-002	42.)	BUSHING (Ø15.9xØ22x4.7)	1
302-06004-000-049	43.)	INPUT SHAFT (M1.75x13TxM1.5x12T)	1
302-05514-000-007	44.)	BALL BEARING (6200)	2
302-05107-000-004	45.)	NEEDLE BEARING (HK 1010)	1
422-W18-0	46.)	INTERNAL CIRCLIP (IS18)	2
302-06041-000-001	47.)	SLIDER GEAR-CD (M1.75x36T)	1
302-06002-000-037	48.)	LAY GEAR (M1.5x46T)	1
302-06042-000-001	49.)	COUNTERSHAFT GEAR (M2.0x26T)	1
421-05025-10	50.)	PARALLEL KEY (5x5x25)	1
421-06015-10	51.)	PARALLEL KEY (6x6x15)	1
302-05128-000-001	54.)	NEEDLE BEARING (TA1815)	1
422-W25-0	55.)	INTERNAL CIRCLIP (IS25)	2
302-06043-000-001	56.)	SLIDER GEAR-AB (M2.0x28T)	1
302-06008-000-039	57.)	OUTPUT GEAR (M2.0x40T)	1
302-04162-000-004	58.)	CLUTCH NUT (M27xP1.0x7.8T)	1
302-05306-000-001	59.)	THRUST BEARING (NTB3047 + AS3047)	1
201-0002-00026-069	61.)	GEAR HOUSING (GRAY-RAL7014)	1
406-M05012080-120	62.)	SOCKET CAP SCREW (M5x12xP0.8)	2
303-02009-004-018	67.)	O-RING (Ø20x3)	2
302-05129-000-001	69.)	NEEDLE BEARING (TA3020)	1
302-05304-000-002	70.)	THRUST BEARING (51106)	1
303-02002-004-025	71.)	OIL SEAL (Ø40xØ50x7)	1
301-03027-000-001	72.)	WATER FEED COLLAR	1
0299-0018-00000-020	73.)	WATER FEED CONNECTOR KIT (1/2")	1
406-M05040080-080	75.)	SOCKET CAP SCREW (M5x40xP0.8)	3
303-02002-004-037	76.)	OIL SEAL (Ø40xØ52x7)	2
470-0	78.)	DOWEL PIN (Ø4x11.8)	2
302-04225-907-001	79.)	ANTI-SEIZE CUP	1
303-02009-004-071	80.)	O-RING (Ø32x1.5)	2
302-05404-000-001	81.)	THRUST RING (3252)	1
302-04226-907-001	82.)	ANTI-SEIZE RING	1
303-02009-004-021	83.)	O-RING (Ø49x1.5)	1
305-00020-000-002	88.)	TERMINAL CONNECTOR BLOCK (PA-10-H)	2
0299-0172-00000-001	94.)	CLUTCH DISC SET	1
303-02063-004-002	95.)	GASKET (BLACK)	1
303-02064-000-001	96.)	SWITCH BOOT	1
201-0068-00164-002	97.)	GEAR SELECTOR (RED-185C)	2
302-04026-901-079	98.)	SPRING (Ø0.6xØ3.8xØ5x11Tx35L)	2
303-01334-100-001	99.)	RELEASE PIN (ORANGE-021C)	2
0299-0180-00000-002	100.)	COUNTERSHAFT SET	1
0299-0093-00000-004	101.)	SPINDLE SET (1/4"-7 x PS1/2"-300.5MM)	1
305-00093-000-001	102.)	BULLS-EYE LEVEL	1
202-0055-00901-005	103.)	SELECTOR DISC	1
202-0055-00901-008	104.)	SELECTOR DISC	1
304-04012-000-008	105.)	LED OVERLOAD LAMP (110V&220V)	1
303-01309-000-001	106.)	LAMP COVER	1
0299-0214-0000-001	A1.)	EXTENSION SPACER	1

4111-2	*	GEAR OIL (625cc)	1
--------	---	------------------	---

MODEL : DM14 / 4 Speed diamond core drill (AGP Europe)



2017.04.12 NO.01-106 A1 Version 1.3