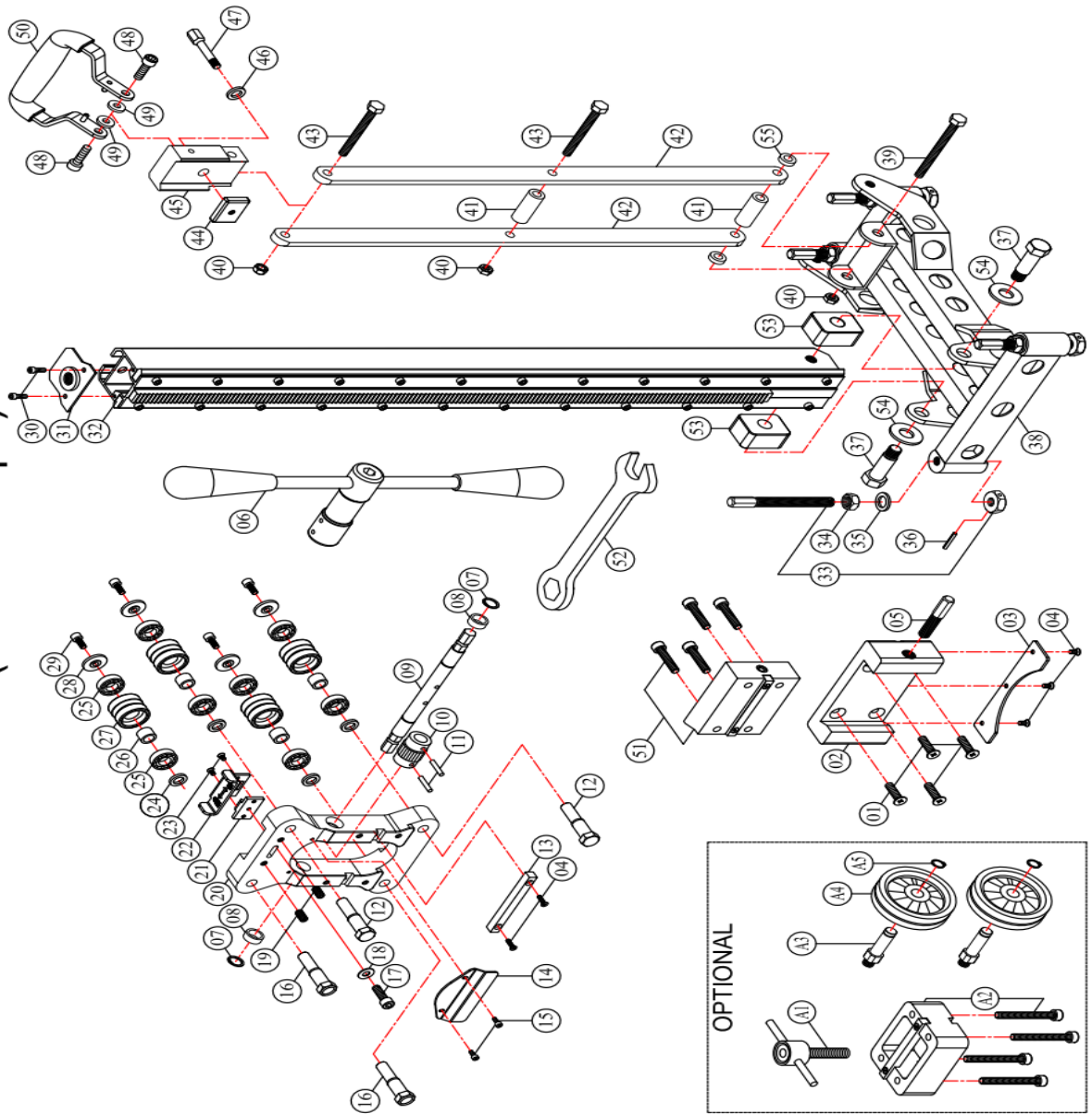


MODEL : S350 Stand (AGP Europe) DATE : 2017.02.20 Version 1.0

	NO.	Parts Name	Q'TY
419-M08030125-080	1.)	FLAT HEAD SOCKET CAP SCREW (M8x30xP1.25)	4
0299-0155-00000-001	2.)	CRADLE	1
302-03135-903-001	3.)	CRADLE PLATE	1
415-M05012080-080	4.)	FLAT HEAD MACHINE SCREW (M5x10xP0.8)	5
302-04434-000-002	5.)	CRADLE LOCK BOLT (M12xP1.75x70L)	1
0299-0153-00000-002	6.)	CRANK HANDLE	1
422-W15-0	7.)	INTERNAL CIRCLIP (IS15)	2
307-01003-000-025	8.)	BUSHING (Ø15xØ20x10)	2
302-04012-907-002	9.)	CRANK SPINDLE	1
302-06044-907-002	10.)	CRANK GEAR (M1.5x16T)	1
414-005025000-050	11.)	ROLL PIN (Ø5x25)	2
302-04428-907-002	12.)	AXLE SHAFT	2
305-00317-000-002	13.)	MOUNTING TENON (10x10x100)	1
302-03018-903-001	14.)	FENCE	1
406-M04008070-080	15.)	SOCKET CAP SCREW (M4x8xP0.7)	2
302-04429-907-002	16.)	ECCENTRIC SHAFT	2
406-M05020080-160	17.)	SOCKET CAP SCREW (M5x20xP0.8)	1
424-051210-20	18.)	FLAT WASHER (Ø5xØ12x1)	1
302-04420-901-003	19.)	DETENT UNIT (M8x16.75xP1.25)	2
201-0072-00913-002	20.)	CARRIAGE	1
302-02022-903-001	21.)	CARRIAGE LOCK	1
302-03216-903-002	22.)	CARRIAGE LOCK LEVER	1
415-M04006070-080	23.)	FLAT HEAD MACHINE SCREW (M4x6xP0.7)	2
302-03215-907-002	24.)	AXLE SPACER B	4
302-05507-000-012	25.)	BALL BEARING (6001)	8
302-04432-907-002	26.)	AXLE SPACER C	4
302-04229-907-002	27.)	GUIDE ROLLER	4
302-04432-907-001	28.)	AXLE SPACER A	4
406-M06016100-080	29.)	SOCKET CAP SCREW (M6x16xP1.0)	4
406-M05010080-080	30.)	SOCKET CAP SCREW (M5x10xP0.8)	2
202-0105-00903-001	31.)	COLUMN CAP	1
0299-0156-00000-002	32.)	COLUMN (900MM)	1
302-04497-903-001	33.)	LEVELING SCREW	4
410-M12000175-080	34.)	HEX NUT (M12xP1.75)	4
424-132320-00	35.)	FLAT WASHER (1/2"xØ23x2)	4
462-10	36.)	ROLL PIN (Ø4x25)	4
302-04433-903-006	37.)	SHOULDER BOLT	2
302-03037-903-007	38.)	BASE	1
401-M10090150-080	39.)	HEX BOLT (M10x90LxP1.5)	1
418-M10000125-080	40.)	NYLOCK NUT (M10xP1.25)	3
302-04295-914-001	41.)	SPACER	2
201-0042-00906-004	42.)	CONNECTING SUPPORT	2
401-M10075150-080	43.)	HEX BOLT (M10x75LxP1.5)	2
302-03133-901-003	44.)	LOCK PLATE	1
201-0071-00906-002	45.)	BUTTRESS LOCK	1
424-102320-20	46.)	FLAT WASHER (Ø10xØ23x2)	1
302-04153-901-002	47.)	ANGLE LOCK CLAMP	1
406-M08016125-080	48.)	SOCKET CAP SCREW (M8x16xP1.25)	2
424-082030-20	49.)	FLAT WASHER (Ø8xØ20x3)	2
202-0036-00902-002	50.)	FRONT HANDLE	1
0299-0036-00000-003	51.)	MOUNTING SPACER	1
305-00009-000-003	52.)	COMBINATION WRENCH (M19)	1
201-0129-0906-003	53.)	FOOT PLATE	2
424-163030-20	54.)	FLAT WASHER (5/8"xØ30x3)	2
302-04295-903-002	55.)	SPACER	2
302-04178-907-001	A1.)	T-HANDLE VISE SCREW (M16xP2.0)	1
0299-0214-0000-001	A2.)	EXTENSION SPACER	1
302-04145-903-003	A3.)	ROLLER AXLE	2
305-00097-000-001	A4.)	WHEEL	2
422-S13-0	A5.)	EXTERNAL CIRCLIP (S-13)	2

MODEL : S350 Stand (AGP Europe)



2017.02.20 NO.01~55 A1~A5 Version 1.0