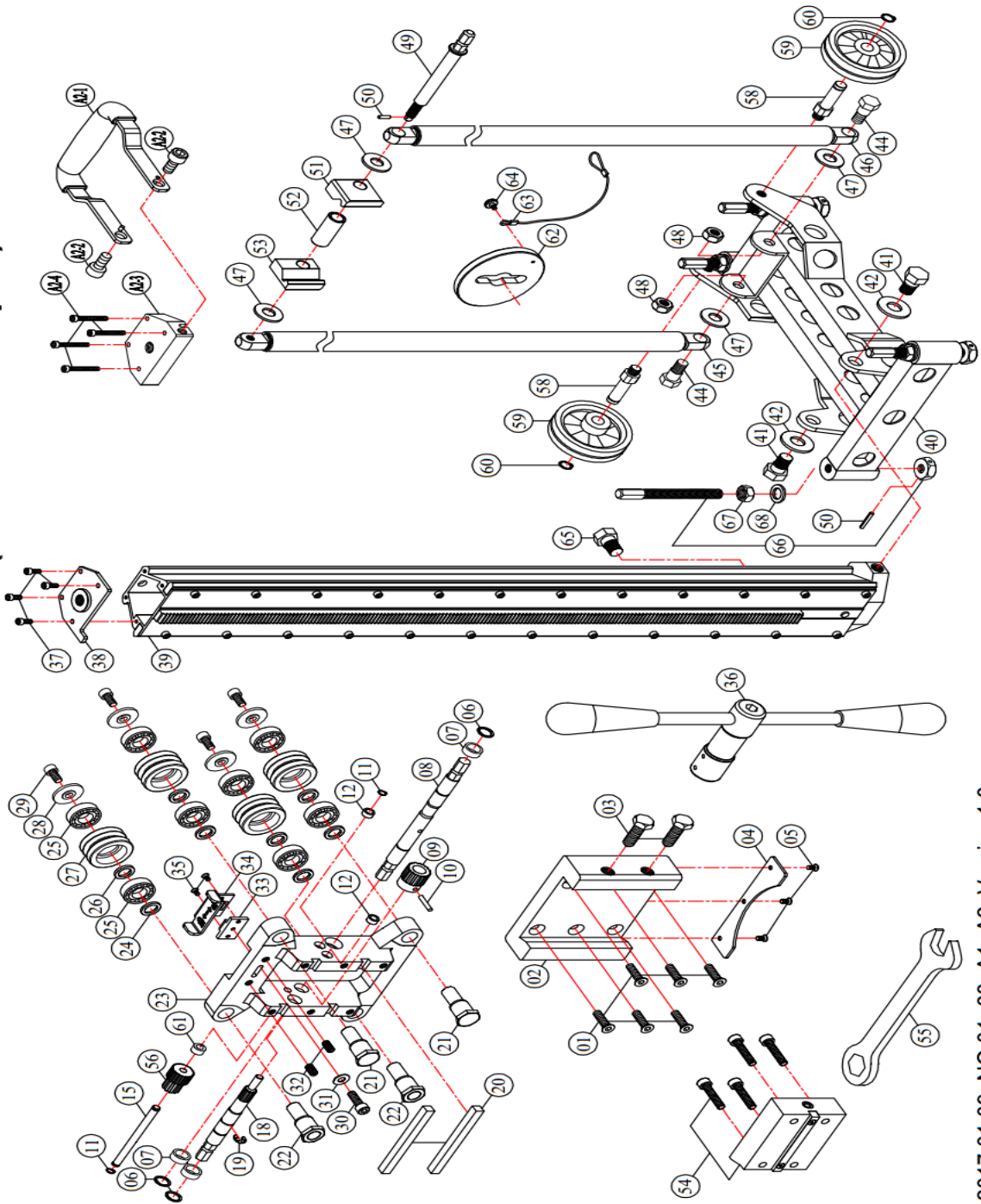


MODEL : S500/1M Stand (AGP Europe) DATE : 2017.01.09 Version 1.0

	NO.	Parts Name	QTY
419-M08030125-080	1.)	FLAT HEAD SOCKET CAP SCREW (M8x30xP1.25)	6
0299-0155-00000-003	2.)	CRADLE	1
302-04434-000-001	3.)	CRADLE LOCK BOLT (M12xP1.75x40L)	2
302-03135-903-001	4.)	CRADLE PLATE	1
415-M05012080-080	5.)	FLAT HEAD MACHINE SCREW (M5x12xP0.8)	3
422-W15-0	6.)	INTERNAL CIRCLIP (IS15)	3
307-01003-000-025	7.)	BUSHING (Ø15xØ20x10)	3
302-04012-907-003	8.)	CRANK SPINDLE	1
302-06044-907-003	9.)	CRANK GEAR (M1.5x16T)	1
462-15	10.)	ROLL PIN (Ø5x25)	1
422-S08-0	11.)	EXTERNAL CIRCLIP (S-8)	2
307-01003-000-005	12.)	BUSHING (Ø8xØ12x6)	2
302-04427-907-002	15.)	INTERMEDIATE SHAFT	1
302-04426-907-002	18.)	REDUCTION CRANK PINION	1
422-E12-0	19.)	E-CLIP (E-12)	1
305-00317-000-001	20.)	MOUNTING TENON (10x10x115)	2
302-04428-907-003	21.)	AXLE SHAFT	2
302-04429-907-003	22.)	ECCENTRIC SHAFT	2
201-0072-00913-003	23.)	CARRIAGE	1
302-03215-907-001	24.)	AXLE SPACER C	4
302-05516-000-003	25.)	BALL BEARING (6202)	8
302-03215-903-001	26.)	AXLE SPACER B	4
302-04229-907-001	27.)	GUIDE ROLLER	4
302-04432-903-001	28.)	AXLE SPACER A	4
406-M08016125-160	29.)	SOCKET CAP SCREW (M8x16xP1.25)	4
406-M05020080-160	30.)	SOCKET CAP SCREW (M5x20xP0.8)	1
424-051210-20	31.)	FLAT WASHER (Ø5xØ12x1)	1
302-04420-901-003	32.)	DETENT UNIT (M8x16.75xP1.25)	2
302-02022-903-001	33.)	CARRIAGE LOCK	1
302-03216-903-002	34.)	CARRIAGE LOCK LEVER	1
415-M04006070-080	35.)	FLAT HEAD MACHINE SCREW (M4x6xP0.7)	2
0299-0153-00000-001	36.)	CRANK HANDLE	1
406-M05010080-080	37.)	SOCKET CAP SCREW (M5x10xP0.8)	4
202-0105-00903-002	38.)	COLUMN CAP	1
0299-0156-00000-009	39.)	COLUMN (900MM)	1
302-03037-903-007	40.)	BASE	1
302-04433-903-001	41.)	SHOULDER BOLT	2
424-163030-20	42.)	FLAT WASHER (5/8"xØ30x3)	2
302-04433-903-002	44.)	SHOULDER BOLT	2
0299-0157-00000-002	45.)	BUTTRESS BAR (L-650MM)	1
0299-0157-00000-003	46.)	BUTTRESS BAR (R-650MM)	1
424-143225-20	47.)	FLAT WASHER (Ø14xØ32x2.5)	4
418-M12000175-080	48.)	NYLOCK NUT (M12xP1.75)	2
302-04437-903-001	49.)	ANGLE LOCK	1
462-10	50.)	ROLL PIN (Ø4x25)	1
201-0133-0906-001	51.)	CLAMP CLAW-LEFT	1
302-04295-903-001	52.)	SPACER	1
201-0133-0906-002	53.)	CLAMP CLAW-RIGHT	1
0299-0036-00000-003	54.)	MOUNTING SPACER	1
305-00009-000-003	55.)	COMBINATION WRENCH (M19)	1
0202-0110-00000-001	56.)	REDUCTION GEAR SET	1
302-04145-903-003	58.)	ROLLER AXLE	2
305-00097-000-001	59.)	WHEEL	2
422-S13-0	60.)	EXTERNAL CIRCLIP (S-13)	2
302-04051-903-003	61.)	HEAD LOCKING KNOB (Ø8xØ14x7.5)	1
302-04464-903-001	62.)	ANCHORING PLATE	1
302-04415-000-003	63.)	TETHER	1
302-04433-903-004	64.)	LOCK BUTTON	1
302-04433-903-005	65.)	SHOULDER BOLT	1
302-04497-903-001	66.)	LEVELING SCREW	4
410-M12000175-080	67.)	HEX NUT (M12xP1.75)	4
424-132320-00	68.)	FLAT WASHER (1/2"xØ23x2)	4
0299-0211-0000-001	A2.)	AUXILIARY HANDLE SET	1
202-0036-00902-001	A2-1.)	FRONT HANDLE	1
406-M12016175-080	A2-2.)	SOCKET CAP SCREW (M12x16xP1.75)	2
301-03036-906-001	A2-3.)	COLUMN CAP	1
406-M05035080-080	A2-4.)	SOCKET CAP SCREW (M5x35xP0.8)	4

**MODEL : S500/1M Stand (AGP Europe)**



2017.01.09 NO.01~68 A1~A2 Version 1.0