

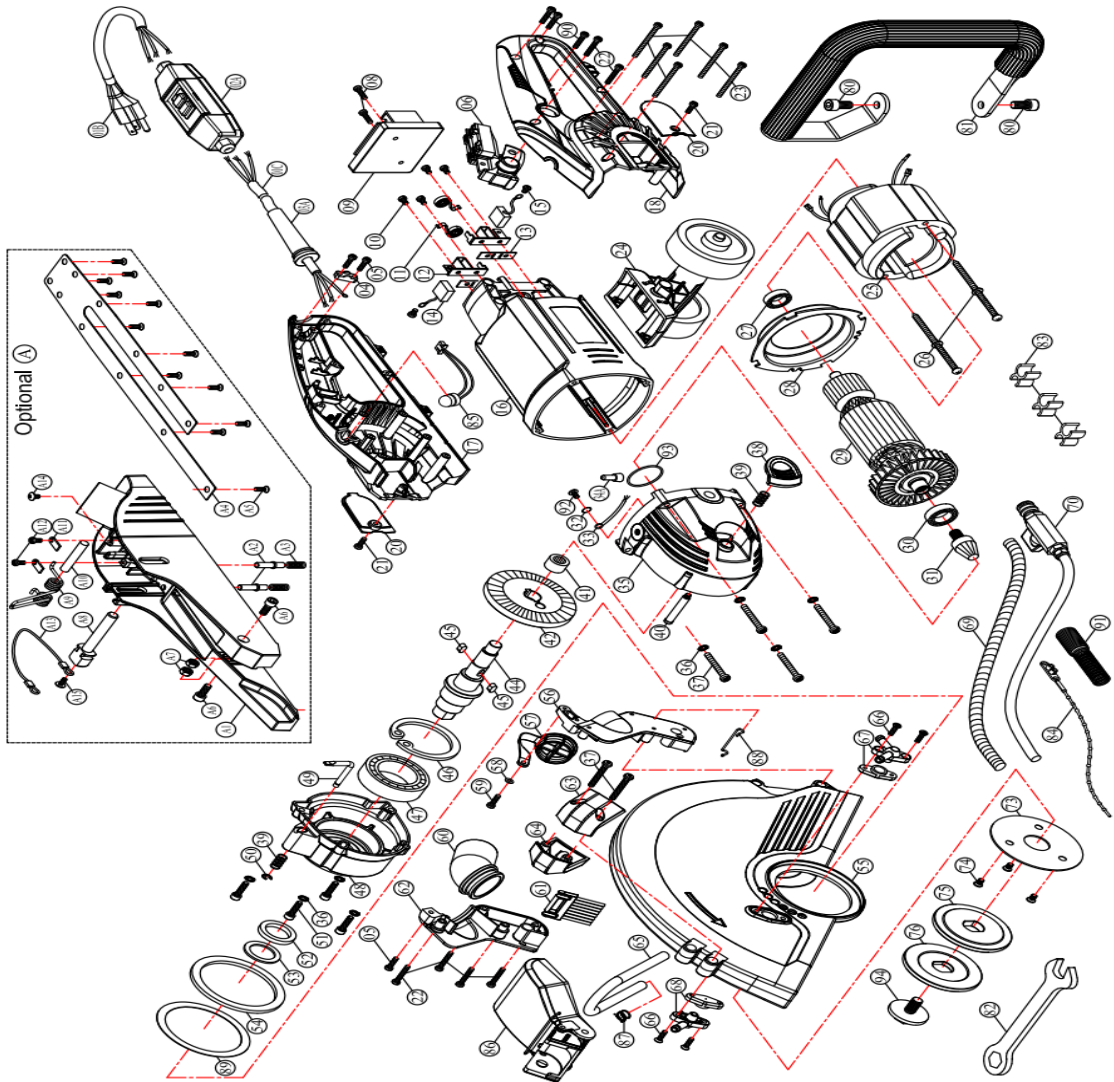
MODEL : C14 - 14" (355mm) Concrete saw (AGP Europe) DATE : 2017.04.13 Version 1.1

	NO.	Parts Name	QTY
206-031503003-01	1B.)	POWER SUPPLY CABLE (VDE-1.5x3Cx0.3M-H07RNF)	1
206-201503270-01	1C.)	POWER SUPPLY CABLE (NO PLUG-1.5x3Cx2.7M-H07RNF)	1
304-03013-004-008	2A.)	PRCD INTERRUPTER PROTECTION (220V)	1
303-02001-004-011	3A.)	CORD ARMOR	1
303-01003-004-001	4.)	CABLE CLIP	1
403-M04014003-160	5.)	PANHEAD TAPPING SCREW-B (M4x14)	3
0299-0014-00004-011	6.)	TRIGGER SWITCH (LOCK-OFF)	1
403-M04016003-160	8.)	PANHEAD TAPPING SCREW-B (M4x16)	2
204-0021-20000-013	9.)	ELECTRONICS UNIT (220V)	1
403-M04008003-020	10.)	PANHEAD TAPPING SCREW-B (M4x8)	4
302-04009-000-004	11.)	BRUSH SPRING (0.4x4x3T)	2
307-02004-000-004	12.)	CARBON BRUSH HOLDER (7x17)	2
303-01303-005-002	13.)	INSULATION PLATE (10x38x1)	2
299-0027-00000-007	14.)	CARBON BRUSH (7x17x19)	2
407-M04006070-030	15.)	PANHEAD MACHINE SCREW (M4x6xP0.7)	2
303-01251-164-041	16.)	MOTOR HOUSING (RED-185C)	1
303-01065-004-008	17.)	HANDLE HALF-RIGHT (BLACK)	1
303-01066-004-008	18.)	HANDLE HALF-LEFT (BLACK)	1
303-01340-004-001	20.)	CARBON CAP (BLACK)	2
403-M04012003-080	21.)	PANHEAD TAPPING SCREW-B (M4x12)	2
403-M04025003-080	22.)	PANHEAD TAPPING SCREW-B (M4x25)	6
403-M04050001-080	23.)	PANHEAD TAPPING SCREW-A (M4x50)	6
0299-0177-00000-001	24.)	GUIDE ROLLER ASSY.	1
299-0002-20000-107	25.)	STATOR (220V-100x54.1x65)	1
402-M05080001-050	26.)	PANHEAD TAPPING SCREW-A-W/WASHER (M5x80)	2
302-05514-000-008	27.)	BALL BEARING (6200)	1
303-01057-004-022	28.)	FAN SHROUD (BLACK)	1
299-0001-20000-135	29.)	ARMATURE (220V-100x54.1x65)	1
302-05516-000-002	30.)	BALL BEARING (6202)	1
302-06018-000-008	31.)	BEVEL PINION GEAR (M2.35x6T)	1
426-040000-00	32.)	EXTERNAL STAR WASHER (M4)	1
306-01100720A035-01	33.)	WIRE LEAD (1007-20#35CM)	1
456-0	34A.)	CRIMP CAP CONNECTOR (C4)	1
201-0002-00001-079	35.)	GEAR HOUSING (MATTE SILVER)	1
425-050000-00	36.)	SPRING WASHER (M5)	8
403-M05035003-020	37.)	PANHEAD TAPPING SCREW-B (M5x35)	6
203-0018-00004-002	38.)	SPINDLE LOCK BUTTON (BLACK)	1
302-04026-901-082	39.)	SPRING (Ø0.9xØ7.4xØ9.2x5Tx16L)	2
302-04119-907-002	40.)	ARBOR LOCK	1
302-05532-000-001	41.)	NEEDLE BEARING (TA1212)	1
302-06015-000-020	42.)	BEVEL GEAR (M2.35x37T)	1
302-04003-000-123	44.)	SPINDLE (M10xP1.5-116.6MM)	1
421-05010-10	45.)	PARALLEL KEY (5x5x10)	2
422-R62-0	46.)	INTERNAL CIRCLIP (R-62)	1
302-05520-000-003	47.)	BALL BEARING (6206)	1
201-0003-00001-055	48.)	GEAR PLATE (MATTE SILVER)	1
302-04186-903-002	49.)	L-CLEVIS PIN	1
422-E05-1	50.)	E-CLIP (E-5)	1
406-M05025080-160	51.)	SOCKET CAP SCREW (M5x25xP0.8)	4
303-02002-004-042	52.)	OIL SEAL (Ø25xØ35x5)	1
308-03001-000-008	53.)	FELT OILER (Ø25xØ35x2.5)	1
303-02065-004-001	54.)	RUBBER FENDER (Ø75xØ91x4)	1
201-0048-00001-007	55.)	INNER SAFETY COVER (MATTE SILVER)	1
303-01342-004-001	56.)	DUST PORT BRACKET-LEFT (BLACK)	1
303-02051-000-001	57.)	DUST PORT PLUG	1
424-041010-10	58.)	FLAT WASHER (Ø4xØ10x1)	1
403-M04010001-160	59.)	PANHEAD TAPPING SCREW-A (M4x10)	1
303-01082-004-001	60.)	DUST ATTACHMENT (BLACK)	1
203-0112-00004-001	61.)	BLADE GUARD BRUSH (BLACK)	1
303-01342-004-002	62.)	DUST PORT BRACKET-RIGHT (BLACK)	1
303-01344-004-001	63.)	TUBE GUIDE-LEFT (BLACK)	1
303-01344-004-002	64.)	TUBE GUIDE-RIGHT (BLACK)	1
0205-0007-00000-017	65.)	TUBE (Ø6.4xØ8.5x0.24M(GRAY))	1
413-M04016001-080	66.)	FLAT HEAD TAPPING SCREW-A (M4x16)	4
0203-0113-00004-001	67.)	WATER NOZZLE ASSY.-L (BLACK)	1
0203-0113-00004-002	68.)	WATER NOZZLE ASSY.-R (BLACK)	1
0205-0008-00000-011	69.)	CABLE PROTECTOR (5/16"x75CM)	1
0299-0018-00000-012	70.)	WATER FEED CONNECTOR KIT	1
302-03227-903-001	73.)	RETAINING PLATE	1
415-M05008080-080	74.)	FLAT HEAD MACHINE SCREW (M5x8xP0.8)	3
302-04222-903-005	75.)	INNER FLANGE (Ø25.4)	1
302-04203-903-002	76.)	COUNTER FLANGE	1
406-M08016125-170	80.)	SOCKET CAP SCREW (M8x16xP1.25)	2
202-0036-00902-003	81.)	FRONT HANDLE	1
305-00009-000-002	82.)	COMBINATION WRENCH (M17)	1
303-01299-000-001	83.)	HOSE JOINER (BLACK)	3
423-00000-1	84.)	ZIP TIE (KTV-150BK)	1
0299-0135-00000-002	85.)	LED INDICATOR LIGHT	1
0299-0184-00000-001	86.)	SPLASH GUARD	1
302-04469-903-001	87.)	WIRE HOSE CLAMP	1
302-04478-901-001	88.)	CLIP-FEMALE	1
205-0015-00000-001	89.)	PLASTIC RING (Ø74xØ91.5x0.25)	1
403-M04020001-160	90.)	PANHEAD TAPPING SCREW-A (M4x20)	3
302-04502-903-001	91.)	SPRING	1
405-M04006070-070	92.)	TRUSS HEAD MACHINE SCREW (M4x6xP0.7)	1
303-02009-004-090	93.)	O-RING (Ø35x1.5)	1
302-04414-000-002	94.)	BOLT (M10xP1.5)	1
0299-0212-0004-002	A.)	DRY DUST SKID ASSY	1
203-0135-00004-001	A1.)	DUST SKID BODY	1

MODEL : C14 - 14" (355mm) Concrete saw (AGP Europe) DATE : 2017.04.13 Version 1.1

302-04368-914-001	A2.)	PLUNGER	2
302-04026-903-010	A3.)	SPRING (Ø1xØ6.2xØ8.2x10Tx35L)	2
302-03135-000-001	A4.)	CRADLE PLATE	1
413-M04014003-080	A5.)	FLAT HEAD TAPPING SCREW-B (M4x14)	12
406-M06016100-020	A6.)	SOCKET CAP SCREW (M6x16xP1.0)	2
410-M06000100-001	A7.)	HEX NUT (M6xP1.0)	2
302-04500-914-001	A8.)	BAYONET PIN	1
302-04166-903-001	A9.)	TORSION SPRING	1
302-04175-914-001	A10.)	BEARING BOLT	1
302-03205-914-001	A11.)	MOUNTING STRAP	2
403-M04010001-160	A12.)	PANHEAD TAPPING SCREW-A (M4x10)	2
302-04415-000-002	A13.)	TETHER	1
496-M04008001-040	A14.)	TRUSS HEAD TAPPING SCREW-A (M4x8)	1
405-M04008070-080	A15.)	TRUSS HEAD MACHINE SCREW (M4x8xP0.7)	1

MODEL : C14 - 14" (355mm) Concrete saw (AGP Europe)



2017.04.13 NO.01~94 A1~A15 Version 1.1