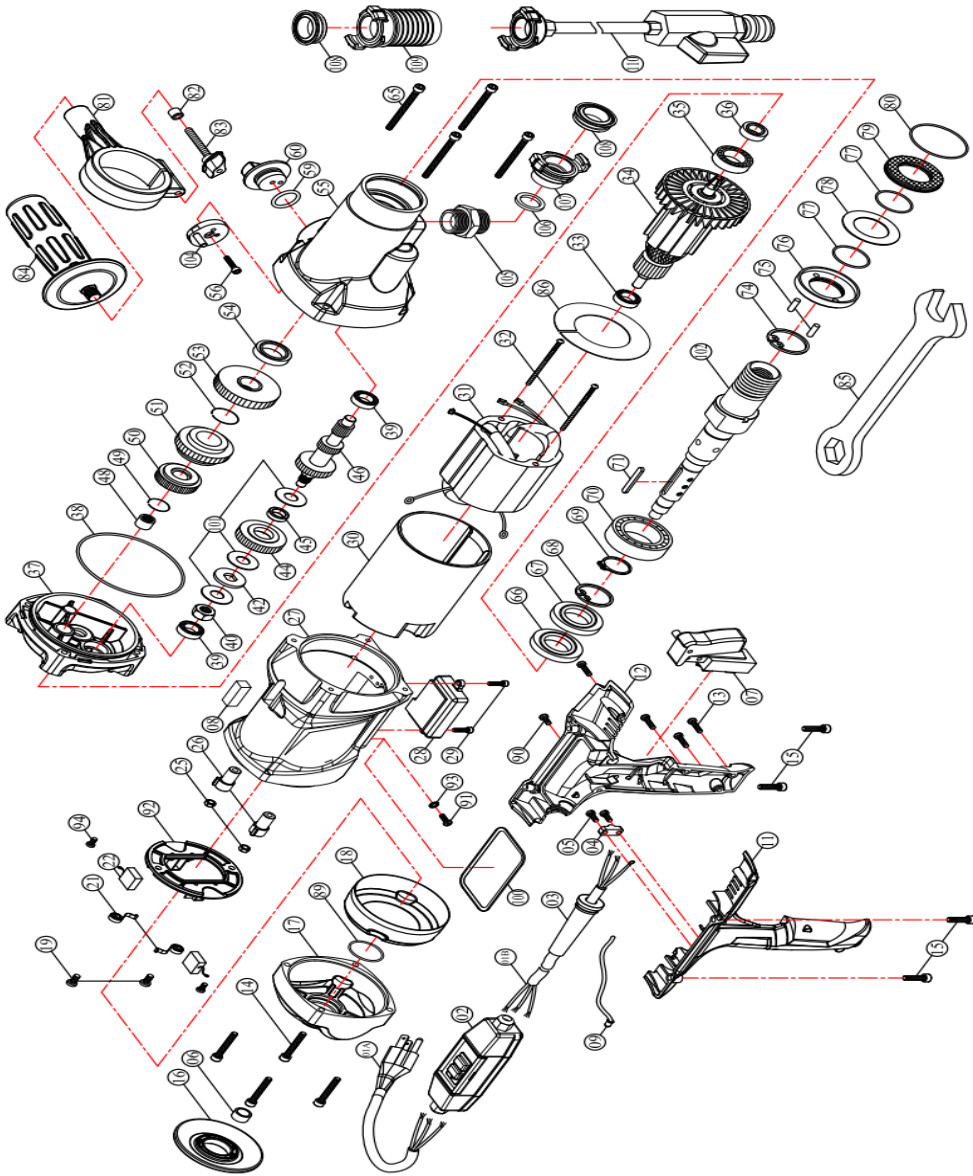


MODEL : DMC6P Diamond core drilling machine (Pistol-Handle Model) (AGP Europe) DATE : 2017.04.12 Version 1.1

	NO.	Parts Name	Q'TY
206-031503014-01	1A.)	POWER SUPPLY CABLE (VDE-1.5x3Cx1.4M-H07RNF)	1
206-201503210-01	1B.)	POWER SUPPLY CABLE (NO PLUG-1.5x3Cx2.1M-H07RNF)	1
304-03013-004-008	2.)	PRCD INTERRUPTER PROTECTION (220V)	1
203-0004-00000-001	3.)	CORD ARMOR	1
303-01003-004-001	4.)	CABLE CLIP	1
403-M04014003-020	5.)	PANHEAD TAPPING SCREW-B (M4x14)	2
305-00093-000-001	6.)	BULLS-EYE LEVEL	1
304-03011-004-034	7.)	SWITCH (110V&220V)	1
305-00093-000-002	8.)	SPIRIT LEVEL (10x10x29)	1
304-04012-000-004	9.)	LED OVERLOAD LAMP (110V & 220V)	1
303-01065-004-006	11.)	HANDLE HALF-RIGHT (BLACK)	1
303-01066-004-006	12.)	HANDLE HALF-LEFT (BLACK)	1
403-M04016003-020	13.)	PANHEAD TAPPING SCREW-B (M4x16)	4
406-M05030080-090	14.)	SOCKET CAP SCREW (M5x30xP0.8)	4
406-M05020080-050	15.)	SOCKET CAP SCREW (M5x20xP0.8)	4
201-0120-0164-001	16.)	BUTT PLATE (RED-185C)	1
201-0015-00026-001	17.)	MOTOR END CASTING (GRAY-RAL7014)	1
303-01296-000-001	18.)	INSULATING COVER	1
403-M04012002-050	19.)	PANHEAD TAPPING SCREW-B (M4x12)	2
302-04009-000-004	21.)	BRUSH SPRING (0.4x4x3T)	2
299-0027-00000-007	22.)	CARBON BRUSH (7x17x19)	2
418-M05000080-050	25.)	NYLOCK NUT (M5xP0.8)	2
303-01295-000-001	26.)	INSULATING SLEEVE	2
201-0020-00026-001	27.)	MOTOR HOUSING (GRAY-RAL7014)	1
204-0021-20000-010	28.)	ELECTRONICS UNIT (220V)	1
407-M04010070-050	29.)	PANHEAD MACHINE SCREW (M4x10xP0.7)	2
303-01297-000-001	30.)	MOTOR INSULATION SLEEVE	1
299-0002-20000-075	31.)	STATOR (220V-81x45.8x70)	1
407-M05080095-020	32.)	PANHEAD MACHINE SCREW (M5x95xP0.8)	2
302-05514-000-008	33.)	BALL BEARING (6200)	1
299-0001-20000-105	34.)	ARMATURE (220V-81x45.8x70)	1
302-05515-000-001	35.)	BALL BEARING (6201)	1
303-02002-004-035	36.)	OIL SEAL (Ø12xØ22x7)	1
201-0003-00164-054	37.)	GEAR PLATE (RED-185C)	1
303-02009-004-017	38.)	O-RING (Ø92x2)	1
302-05502-000-001	39.)	BALL BEARING (608)	2
302-04162-901-002	40.)	CLUTCH NUT (M10xP1.25x8.1T)	1
302-03030-901-002	42.)	PRESSURE DISC (Ø12.1xØ28x2.65)	1
302-06005-000-030	44.)	INPUT GEAR (M1.0x38T)	1
307-03006-000-001	45.)	BUSHING (Ø12xØ18x5)	1
302-06036-000-010	46.)	INPUT SHAFT (M1.25x24Tx12Tx8T)	1
302-05107-000-004	48.)	NEEDLE BEARING (HK 1010)	1
422-W14-0	49.)	INTERNAL CIRCLIP (IS14)	1
302-06008-000-031	50.)	OUTPUT GEAR (M1.25x29T)	1
302-06019-000-003	51.)	SPINDLE GEAR (M1.25x42T)	1
422-W18-0	52.)	INTERNAL CIRCLIP (IS18)	1
302-06008-000-032	53.)	OUTPUT GEAR (M1.25x46T)	1
303-02002-004-023	54.)	OIL SEAL (Ø22xØ32x7)	1
201-0002-00026-073	55.)	GEAR HOUSING (GRAY-RAL7014)	1
406-M05012080-070	56.)	SOCKET CAP SCREW (M5x12xP0.8)	1
303-02009-004-018	59.)	O-RING (Ø20x3)	1
201-0068-00164-001	60.)	GEAR SELECTOR (RED-185C)	1
406-M05050080-030	65.)	SOCKET CAP SCREW (M5x50xP0.8)	4
303-02002-004-018	66.)	OIL SEAL (Ø25xØ45x7)	1
303-02002-004-017	67.)	OIL SEAL (Ø25xØ47x7)	1
422-R47-0	68.)	INTERNAL CIRCLIP (R-47)	1
422-S25-0	69.)	EXTERNAL CIRCLIP (S-25)	1
302-05519-000-003	70.)	BALL BEARING (6205)	1
421-05040-10	71.)	PARALLEL KEY (5x5x40)	1
422-R52-0	74.)	INTERNAL CIRCLIP (R-52)	1
470-0	75.)	DOWEL PIN (Ø4x11.8)	2
302-04225-907-001	76.)	ANTI-SEIZE CUP	1
303-02009-004-071	77.)	O-RING (Ø32x1.5)	2
302-05404-000-001	78.)	THRUST RING (3252)	1
302-04226-907-001	79.)	ANTI-SEIZE RING	1
303-02009-004-021	80.)	O-RING (Ø49x1.5)	1
201-0069-00001-001	81.)	HANDLE CLAMP (SILVER)	1
302-04051-901-006	82.)	SPACER (Ø6.1xØ12x10)	1
203-0005-00901-007	83.)	THUMB SCREW (M6x55xP1.0)(BLACK)	1
203-0001-00000-004	84.)	FRONT HANDLE (M12xP1.75)	1
305-00009-903-001	85.)	COMBINATION WRENCH (M32)	1
303-03005-000-001	86.)	FAN BAFFLE (Ø48xØ87.5x1)	1
303-02009-004-062	89.)	O-RING (Ø30x1.5)	1
403-M04008003-050	90.)	PANHEAD TAPPING SCREW-B (M4x8)	1
407-M04008070-050	91.)	PANHEAD MACHINE SCREW (M4x8xP0.7)	1
0299-0141-00000-001	92.)	BRUSH HOLDER PLATE ASSY.	1
426-040000-00	93.)	EXTERNAL STAR WASHER (M4)	1
407-M04006070-120	94.)	PANHEAD MACHINE SCREW (M4x6xP0.7)	2
303-02063-004-001	100.)	GASKET (BLACK)	1
0299-0172-00000-004	101.)	CLUTCH DISC SET	1
0299-0093-00000-009	102.)	SPINDLE SET (1/4"-7 x PS1/2")	1
202-0055-00901-005	104.)	SELECTOR DISC	1
305-00071-000-011	105.)	NIPPLE	1
305-03348-004-002	106.)	SEAL (Ø19xØ26x3)	1
305-00071-000-009	107.)	GEKA FEMALE CLAW	1
305-03348-004-001	108.)	SEAL (Ø36xØ29.5x12)	2
305-00071-000-010	109.)	GEKA HOSE CLAW	1
0299-0018-00000-022	110.)	WATER FEED CONNECTOR KIT	1

MODEL : DMC6P Diamond core drilling machine (Pistol-Handle Model) (AGP Europe)



2017.04.12 NO.01~110 Version 1.1



www.hippotools.be