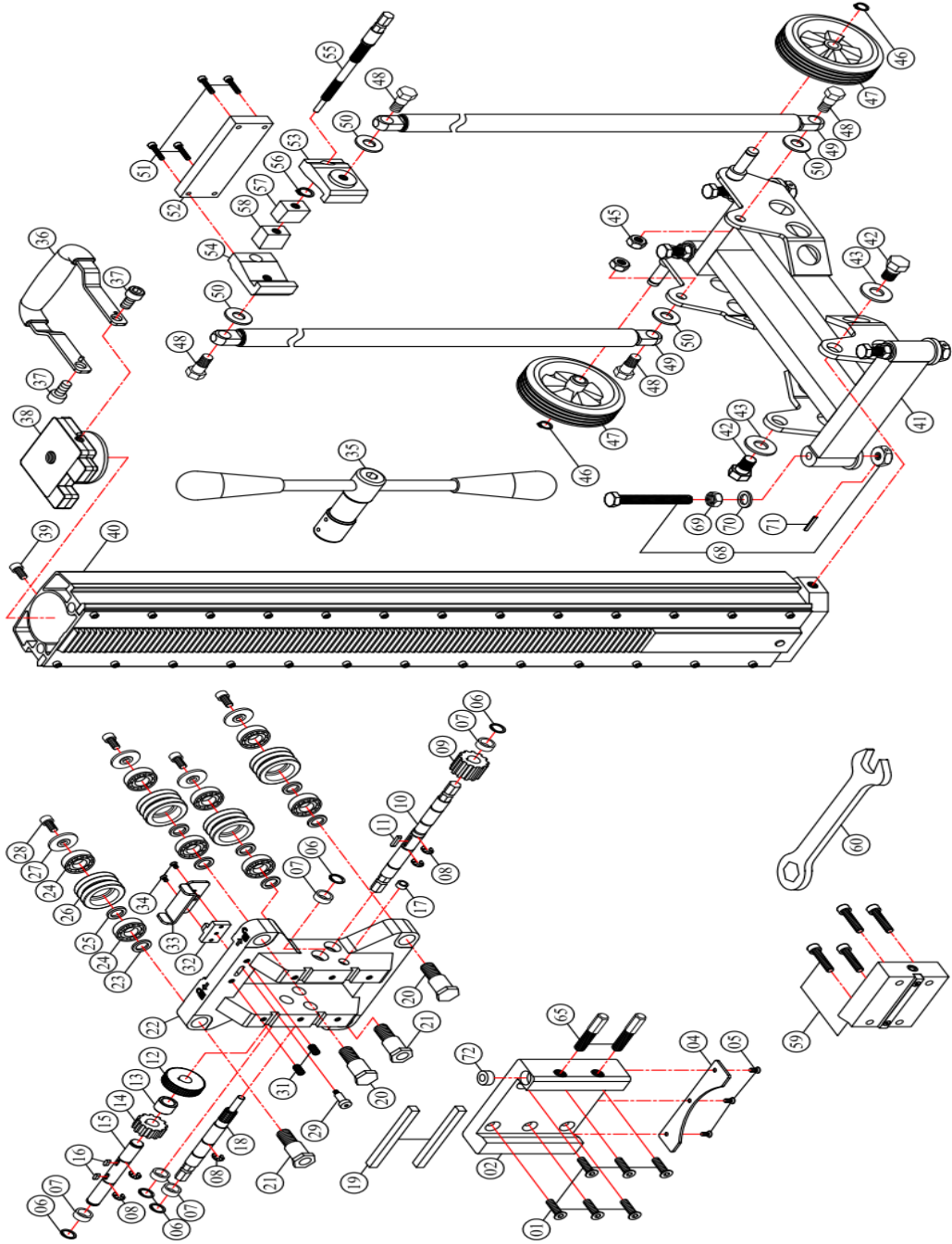


MODEL : S800/1M Stand DATE : 2017.07.25 Version 1.5

	NO.	Parts Name	Q'TY
419-M08030125-080	1.)	FLAT HEAD SOCKET CAP SCREW (M8x30xP1.25)	6
0299-0155-00000-003	2.)	CRADLE	1
302-03135-903-001	4.)	CRADLE PLATE	1
415-M05012080-080	5.)	FLAT HEAD MACHINE SCREW (M5x12xP0.8)	3
422-W15-0	6.)	INTERNAL CIRCLIP (IS15)	5
307-01003-000-025	7.)	BUSHING (Ø15xØ20x10)	5
422-E12-0	8.)	E-CLIP (E-12)	5
302-06044-907-001	9.)	CRANK GEAR (M2.5x12T)	1
302-04012-907-001	10.)	CRANK SPINDLE	1
421-04020-10	11.)	PARALLEL KEY (4x4x20)	1
302-06019-907-002	12.)	SPINDLE GEAR (M1.0x46T)	1
302-04029-907-003	13.)	SHAFT RACE (Ø15xØ22x15)	1
302-06019-907-001	14.)	SPINDLE GEAR (M2.5x12T)	1
302-04427-907-001	15.)	INTERMEDIATE SHAFT	1
421-04010-10	16.)	PARALLEL KEY (4x4x10)	2
307-01003-000-005	17.)	BUSHING (Ø8xØ12x6)	1
302-04426-907-001	18.)	REDUCTION CRANK PINION	1
305-00317-000-001	19.)	MOUNTING TENON (10x10x115)	2
302-04428-907-001	20.)	AXLE SHAFT	2
302-04429-907-001	21.)	ECCENTRIC SHAFT	2
201-0072-00913-001	22.)	CARRIAGE	1
302-03215-907-001	23.)	AXLE SPACER C	4
302-05516-000-003	24.)	10201-006-211-6062-001-026	8
302-03215-903-001	25.)	AXLE SPACER B	4
302-04229-907-001	26.)	GUIDE ROLLER	4
302-04432-903-001	27.)	AXLE SPACER A	4
406-M08016125-160	28.)	SOCKET CAP SCREW (M8x16xP1.25)	4
302-04127-901-004	29.)	FENCE PIVOT BOLT (M5xP0.8x23.7L)	1
302-04420-901-003	31.)	DETENT UNIT (M8x16.75xP1.25)	2
302-02022-903-002	32.)	CARRIAGE LOCK	1
302-03216-903-001	33.)	CARRIAGE LOCK LEVER	1
415-M04008070-080	34.)	FLAT HEAD MACHINE SCREW (M4x8xP0.7)	2
0299-0153-00000-001	35.)	CRANK HANDLE	1
202-0036-00902-001	36.)	FRONT HANDLE	1
406-M12016175-080	37.)	SOCKET CAP SCREW (M12x16xP1.75)	2
303-01130-004-002	38.)	TANK COVER LID (BLACK)	1
406-M05010080-160	39.)	SOCKET CAP SCREW (M5x10xP0.8)	1
0299-0156-00000-001	40.)	COLUMN (1000MM)	1
302-03037-903-004	41.)	BASE	1
302-04433-903-001	42.)	SHOULDER BOLT	2
424-163030-20	43.)	FLAT WASHER (5/8"xØ30x3)	2
418-M12000175-080	45.)	NYLOCK NUT (M12xP1.75)	2
422-S13-0	46.)	EXTERNAL CIRCLIP (S-13)	2
305-00097-000-001	47.)	WHEEL	2
302-04433-903-002	48.)	SHOULDER BOLT	4
0299-0157-00000-001	49.)	BUTTRESS BAR (650MM)	2
424-143225-20	50.)	FLAT WASHER (Ø14xØ32x2.5)	4
406-M05025080-160	51.)	SOCKET CAP SCREW (M5x25xP0.8)	4
201-0130-0906-001	52.)	CLAMP PLATE	1
201-0131-0906-001	53.)	CLAMP CLAW-LEFT	1
201-0131-0906-002	54.)	CLAMP CLAW-RIGHT	1
302-04430-907-001	55.)	ANDLE CLAMP BOLT	1
422-S15-0	56.)	EXTERNAL CIRCLIP (S-15)	1
302-04425-903-001	57.)	CLAMP WEDGE-LEFT	1
302-04425-903-002	58.)	CLAMP WEDGE-RIGHT	1
0299-0036-00000-003	59.)	MOUNTING SPACER	1
305-00009-000-003	60.)	COMBINATION WRENCH (M19)	1
302-04434-000-002	65.)	CRADLE LOCK BOLT (M12xP1.75x70L)	2
302-04497-903-002	68.)	LEVELING SCREW	4
410-M12000175-080	69.)	HEX NUT (M12xP1.75)	4
424-132320-00	70.)	FLAT WASHER (1/2"xØ23x2)	4
462-10	71.)	ROLL PIN (Ø4x25)	4
305-00093-000-001	72.)	BULLS-EYE LEVEL	1

**MODEL : S800/1M Stand**



2017.07.25 NO.01~72 Version 1.5